

Hand Book - Reefer Booking 冷冻柜订舱手册



0532 80951000-0-4

我们的专家团队随时为您服务



Sample 范例

The screenshot shows the Maersk customer portal interface. At the top, there is a navigation bar with the Maersk logo, a search bar, and user information (ZH_HANS). A dropdown menu is open under the search bar, showing 'New booking' and 'Duplicate booking'. Two callouts point to these options: '方式1.新订舱' (Method 1: New booking) points to 'New booking', and '方式2.复制已有订舱' (Method 2: Copy existing booking) points to 'Duplicate booking'. Below the navigation bar, there is a search bar for '货物、提单或集装箱编号' (Cargo, Bill of Lading, or Container Number) and a '跟踪' (Track) button. The main content area is divided into several sections:

- 货物预计抵港时间变更** (Cargo arrival time change): A table showing changes in arrival times for different periods.
- 货船运输货物** (Cargo transport): Two cards showing '759' and '737' with '即将离港' (Departing soon) and '即将到港' (Arriving soon) labels.
- 待办事项** (To-do items): A list of tasks like '提交装船须知' (Submit loading instructions) and '提交 VGM' (Submit VGM).
- 进口滞港费和滞箱费** (Import demurrage and detention charges): A section for viewing details of charges.
- 提货单** (Bill of Lading): A section for applying for a bill of lading.
- 托管式分配** (Custodial allocation): A section for viewing all allocations.



Sample 范例

2

MAERSK 价格 订舱 跟踪 船期 供应链 管理

您的订舱详细信息

New booking Duplicate booking

选择正确的运输条款

选择正确的运输条款

从 (城市, 国家/地区) 到 (城市, 国家/地区)

运输模式

STORE DOOR (SD) CONTAINER YARD (CY)

地点

Qingdao (Shandong), China Colombo, Sri Lanka

填写起运港和目的港只需输入港口名称, 不需要填写国家名, 下拉菜单会自动联想相关港口名称) 然后选择正确的“港口名称”

我想在另一个城市提空箱

中国地区还不能, 请务必留空

合约方

SHANDONG SMART INTERNATIONAL LOGISTICS CO LTD (40000057097) QINGDAO, CHINA

订舱联系人

Angel Pang (40602905203) 订舱方的法定联系人

离港日期

15 NOV 2020

输入具体的品名, 根据提示务必选择正确的打冷模式 Non-Frozen or Frozen (保鲜或冷冻)

品名类别 (Commodity)

Garlic dried, non-frozen, vegetables

此订舱中也包含需要提供温度控制的货物

此订舱中也包含危险品 (所有集装箱中)

务必选择需要提供温度设置

集装箱类型和尺寸

1 REEFER CONTAINER

20 Reefer Standard

40 Reefer High

选择正确的箱型 40 Reefer High 或者 20 Reefer standard

集装箱数量

1

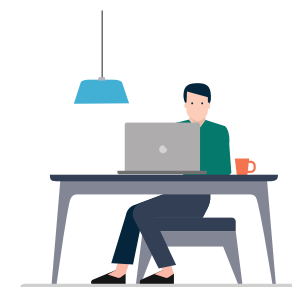
箱量

每个集装箱的重量 (kg - 仅货物)

25000

货重

冻柜订舱请特别注意星号所提示内容



Sample 范例

您的订舱详细信息

从 (城市, 国家/地区) 到 (城市, 国家/地区)

运输模式

STORE DOOR (SD) CONTAINER YARD (CY)

地点

Qingdao (Shandong), China Lome, Togo

我想在另一个城市提空箱

合约方

客户参考 (可选)

订舱联系人

ANGEL LOGISTICS CO LTD (40600057097) Angel Pang (40602965263)

依您输入的资料, 没有找到舱保 (commitment)

您有以下选择:

修改订舱详细信息

或

请在下方输入合约

输入合约号

我没有合约内舱保协议 (commitment)

继续

最早离港日期

12 NOV 2020

您订舱中的集装箱

品名类别 (Commodity)

Garlic dried, frozen, vegetables

此订舱中包含需要特殊处理的货物

此订舱中包含危险货物 (所有集装箱中)

返回上一页修改合约方

在此输入正确的合约方

3

如无疑义, 直接勾选此处

4

点击“继续”



Sample 范例

MAERSK 价格 订舱 跟踪 船期 供应链 管理

新建订舱

在下方设定您的订舱详情

输入订舱确认的接收人

订舱详情
联系人: Angel Pang
订舱方参考号 (可选):
订舱号等:

货物联络方 (Parties) Show Party Details

Service Contract Number (Optional)

如果右边“运价概览”里搜索出的信息与实际情况不符，请在此手动录入

船期

起始地	抵达	航程	船名 / 航次	显示明细
03 12月	21 12月	18 天	ALEXANDER BAY / 049W	显示明细
10 12月	28 12月	18 天	MEA DUMMY 20 / 050W	显示明细
17 12月	04 1月	18 天	BEIJING BRIDGE / 051W	显示明细

选择所需船期

集装箱详情

Show Container Details

Merchant haulage instructions

Request specific equipment release time and place for export (optional)

集装箱	品名类别 (Commodity)	Show Details
40' Reefer High (25000 kg) Add haulage details	Garlic dried, non-frozen, vegetables	Show Details

集装箱的放箱时间和地点的确认方为: Maersk

冷藏箱设置

集装箱类型: 标准集装箱 (40')
温度范围: -30°C 目的地的 +30°C
点击“显示高级设置”进行湿度和通风的设置

显示高级设置 (可选)

温度信息

温度 (°C):
-50° 0°
输入您需要的温度设置 (C° 摄氏度)

显示高级温度设置 (可选)

冻柜订舱请特别注意星号所提示内容

5

提交订舱

如果右边“运价概览”里搜索出的信息与实际情况不符，请在此手动录入

点击可回到订舱第一个界面

核对品名信息,如有不符可返回上一菜单更正



Sample 范例

The screenshot shows the Maersk website's booking confirmation page. At the top, the Maersk logo and navigation menu are visible. The main heading is "订舱已接收" (Booking Received). Below it, the booking details for SHANDONG SHIPING CO LTD are shown. A green checkmark icon indicates successful confirmation, with a message: "您的订舱号码是 91170002, 我们预期在两个小时内为您确认" (Your booking number is 91170002, we expect to confirm for you within two hours). A blue callout box points to the "可打印回执" (Printable Receipt) link, stating: "成功提交订舱后系统会自动生成一个9位阿拉伯数字的订舱号码, 预计两个小时内我们将在订舱审核通过后以邮件形式为您发功订舱确认书 (Booking Confirmation)" (After successful submission, the system will automatically generate a 9-digit Arabic numeral booking number, and we will email you a booking confirmation within two hours after review). Another blue callout box points to the "考虑附加产品" (Consider Add-ons) section, stating: "点击可打印/保存您的订舱信息" (Click to print/save your booking information). Below this, there are three cards for "下一步" (Next Steps): "新建订舱" (New Booking), "复制此订单?" (Copy this order?), and "或前往货物信息集" (Or go to cargo information). The footer contains various links like "公司简介" (About Us), "联系我们" (Contact Us), "条款与条件" (Terms & Conditions), and "点对点服务" (Point-to-Point Service).



传统订舱备注的标准填写格式

标准备注格式:	Request Type	How to update User Define Notes:
Split	Split booking	1 CNT 1 SO one container one SO
Product	ETD required(DD/MM/YYYY)	ETD 31/05/2017 ETD:31/05/2017
Product	Booking export from Zhongshan Waimao(Sinotrans)	POR:WAIMAO
Product	Booking export from XIAOLAN but could not select XIAOLAN via Intra channel	POR:XIAOLAN
Product	Booking export from Huangpu Wuchong	WUCHONG
Product	Booking export from Huangpu Guangbaotong	Guangbaotong
Product	Booking export from XIYU	CIVET
Stowage	On deck	On deck
Stowage	Under deck	Under deck
Stowage	Away from heat	Away from heat
Equipment	Equipment - 53' release	EQU:53
Equipment	Equipment - Hanger container (Garment-On-Hanger)	GOH
Equipment	Equipment - Shipper owned container	SOC
Equipment	Equipment - Container nomination service	Nomination container





0532 80951000-0-4

订舱方面如有任何疑问，欢迎致电咨询

马士基大中华区冻柜组竭诚为您服务

