

Hand Book - Reefer Booking 冷冻柜订舱手册



如果您在中国大陆区域，请拨打：+86 400 8423 818
如果您在中国香港地区，请拨打：+852 3104 5918

我们的专家团队随时为您服务



Sample 范例

The screenshot shows the Maersk customer portal interface. At the top, there is a navigation bar with the Maersk logo, a search bar, and user information (ZH_HANS). A dropdown menu is open under the search bar, showing 'New booking' and 'Duplicate booking'. Two blue callout boxes point to these options: '方式1.新订舱' (Method 1: New booking) points to 'New booking', and '方式2.复制已有订舱' (Method 2: Duplicate existing booking) points to 'Duplicate booking'. Below the navigation bar, there is a search bar for '货物、提单或集装箱编号' (Cargo, Bill of Lading, or Container Number) and a '跟踪' (Track) button. The main content area is divided into several sections:

- 货物预计抵港时间变更** (Cargo arrival time change): A table showing changes in arrival times. The table has two columns: '此前变更' (Previous change) and '预计抵港时间变更' (Estimated arrival time change). The rows are: '24 小时' (24 hours) with 86 and 99+; '1-3 天' (1-3 days) with 99+ and 99+; '3-7 天' (3-7 days) with 99+ and 99+.
- 货船运输货物** (Cargo transport): Two large numbers, 759 and 737, representing cargo volumes. Below each number is the text '即将离港在接下来 7 天' (Departing in the next 7 days).
- 待办事项** (To-do items): A list of tasks, including '出口任务 (7 天后到期)' (Export tasks (due in 7 days)), '提交装船须知' (Submit loading instructions) with 99+ items, and '提交 VGM' (Submit VGM) with 99+ items.
- 进口滞港费和滞箱费** (Import demurrage and detention charges): A section for viewing information about demurrage and detention charges. It includes a field for '提单号码' (Bill of Lading number) and a button to '查看滞港费和滞箱费详情' (View details).
- 提货单** (Delivery Order): A section for viewing and submitting delivery orders. It includes a field for '提单编号' (Bill of Lading number) and a button to '申领交货单' (Apply for delivery order).
- 托管式分配** (Custodial allocation): A section for viewing allocation details. It includes a button to '查看所有分配' (View all allocations).



Sample 范例

2

冻柜订舱请特别注意星号所提示内容

选择正确的运输条款

选择正确的运输条款

填写起运港和目的港只需输入港口名称, 不需要填写国家名, 下拉菜单会自动联想相关港口名称, 然后选择正确的“港口名称”

中国地区还不能, 请务必留空

离港日期

输入具体的品名, 根据提示务必选择正确的打冷模式 Non-Frozen or Frozen (保鲜或冷冻)

务必选择需要提供温度设置

选择正确的箱型
40 Reefer High 或者 20 Reefer standard

箱量

货重

MAERSK 价格 订舱 跟踪 船期 供应链 管理

您的订舱详细信息

New booking Duplicate booking

从 (城市, 国家/地区) 运输模式 地点

到 (城市, 国家/地区) 运输模式 地点

我想在另一个城市提货

合约方

订舱联系人

最早离港日期

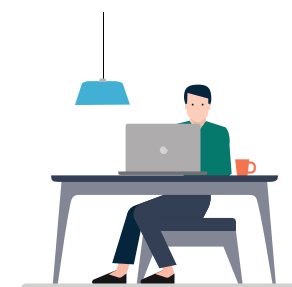
您订舱中的集装箱

品名类别 (Commodity)

集装箱类型和尺寸

集装箱数量

每个集装箱的重量 (kg - 仅货物)



Sample 范例

The screenshot shows the Maersk booking system interface. A modal dialog box is open in the center, titled "依您输入的资料, 没有找到舱保 (commitment)". The dialog offers two options: "修改订舱详细信息" (Modify booking details) and "请在下方输入合约" (Please enter contract details below). The "我没有合约内舱保协议 (commitment)" option is selected. A "继续" (Continue) button is at the bottom of the dialog. Callout annotations include: "返回上一页修改合约方" (Return to the previous page to modify the contract party), "在此输入正确的合约方" (Enter the correct contract party here), "3" (pointing to the "修改订舱详细信息" button), "如无疑义, 直接勾选此处" (If there is no doubt, check this directly), and "4" (pointing to the "继续" button).



Sample 范例

MAERSK 价格 订舱 跟踪 船期 供应链 管理

新建订舱

在下方设定您的订舱详情

订舱详情

联系人: Angel Pang | 订舱方参考号 (可选): | 订单号等: |

货物联络方 (Parties) | Show Party Details

Service Contract Number (Optional): |

船期

起始地	抵达	航程	船名 / 航次	显示明细
03 12月	21 12月	18 天	ALEXANDER BAY / 049W	显示明细
10 12月	28 12月	18 天	MEA DUMMY 20 / 050W	显示明细
17 12月	04 1月	18 天	BEIJING BRIDGE / 051W	显示明细

集装箱详情 | Show Container Details

Merchant haulage instructions

Request specific equipment release time and place for export (optional)

集装箱	品名类别 (Commodity)	Show Details
40' Reefer High (25000 kg) Add haulage details	Garlic dried, non-frozen, vegetables	Show Details

集装箱的放箱时间和地点的确认方为: Maersk

冷藏箱设置

集装箱类型: 标准集装箱 (40') | 温度范围: -30°C 目的地 (C) +30°C | 显示高级设置 (可选)

温度信息

温度 (°C): | 显示高级温度设置 (可选)

运价概览

运费费率: | 提交订舱: 5

集装箱: 1x 40' Reefer High
品名类别 (Commodity): Garlic dried, non-frozen, vegetables
从 (城市, 国家/地区): Qingdao (Shandong) China
到 (城市, 国家/地区): Colombo, Sri Lanka

编辑订舱明细

冻柜订舱请特别注意星号所提示内容

输入订舱确认的接收人

如果右边“运价概览”里搜索出的信息与实际情况不符, 请在此手动录入

选择所需船期

点击可回到订舱第一个界面

核对品名信息,如有不符可返回上一菜单更正

点击“显示高级设置”进行湿度和通风的设置

输入您需要的温度设置 (C° 摄氏度)



MAERSK 价格 订舱 跟踪 船期 供应链 管理 ZH_HANS

订舱已接收

订舱方 SHANDONG SHIPING CO LTD 在 27 Oct 2020 09:42 (local time)

您的订舱号码是 91470002, 我们预期在两个小时内为您确认

可打印回执 返回主页

考虑附加产品
以下产品可用于您的预定:

下一步

新建订舱
直接进入订舱界面新建订单
新建订舱

复制此订单?
复制相同的订单
复制订舱

或前往货物信息集
查看此票货物的所有信息
货物信息集

成功提交订舱后系统会自动生成一个9位阿拉伯数字的订舱号码, 预计两个小时内我们将在订舱审核通过后以邮件形式为您发送订舱确认书 (Booking Confirmation)

公司简介
人才招聘
马士基发展
新闻与咨询
可持续发展
检举

联系我们
投资者
新闻媒体
采购
帮助支持

条款与条件
隐私政策
Cookie 政策
Cookie 偏好

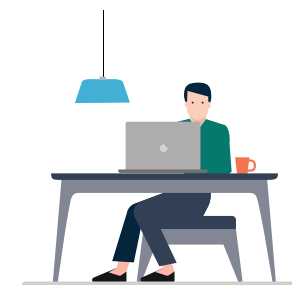
点对点服务
供应链和物流
运输服务
船名船期
集装箱销售

MAERSK



传统订舱备注的标准填写格式

标准备注格式:	Request Type	How to update User Define Notes:
Split	Split booking	1 CNT 1 SO one container one SO
Product	ETD required(DD/MM/YYYY)	ETD 31/05/2017 ETD:31/05/2017
Product	Booking export from Zhongshan Waimao(Sinotrans)	POR:WAIMAO
Product	Booking export from XIAOLAN but could not select XIAOLAN via Intra channel	POR:XIAOLAN
Product	Booking export from Huangpu Wuchong	WUCHONG
Product	Booking export from Huangpu Guangbaotong	Guangbaotong
Product	Booking export from XIYU	CIVET
Stowage	On deck	On deck
Stowage	Under deck	Under deck
Stowage	Away from heat	Away from heat
Equipment	Equipment - 53' release	EQU:53
Equipment	Equipment - Hanger container (Garment-On-Hanger)	GOH
Equipment	Equipment - Shipper owned container	SOC
Equipment	Equipment - Container nomination service	Nomination container



订舱方面如有任何疑问，欢迎致电咨询
马士基大中华区冻柜组竭诚为您服务



如果您在中国大陆区域，请拨打：+86 400 8423 818
如果您在中国香港地区，请拨打：+852 3104 5918

我们的专家团队随时为您服务

